

UNIVERSAL GUARD™

FOR UNIVERSAL USE ON WIRED & WIRELESS ELECTRONIC DEVICES



AVAILABLE IN

2 Pack	(#39219)
6 Pack	(#39217)
12 Pack	(#39218)

FEATURES

- Proprietary GIAplex™ dual action technology, designed to neutralize the effects of electropollution exposure, as well as reinforce your body's natural resilience to it.*
- Universally programmed, allowing use on multiple devices, both wired and wireless
- Designed to assist in alleviating the cumulative stress associated with living in today's electronic and wireless environment*
- Resilient & long-lasting

POWERED BY
giaplex

GIAplex™ combines the benefits of the patented noise field technology MRET™ (Molecular Resonance Effect Technology), and GIA's proprietary subtle energy technology ERT™ (Energy Resonance Technology).

The combination of these two ground breaking technologies offers an effective way to deal with the cumulative stress associated with living in today's electronic and wireless environment.*

Please read our Easy-to-Use Guide (located on the back of this page), which lists the recommended number of Universal Guard chips per device, as well as detailed placement instructions.

*"In my home office, I use a Laptop Computer, a Wireless Router, a Cordless Phone, as well as my Cell Phone. When I placed the GIA Universal Guard on my Router, Computer and Cordless Phone, the difference was astonishing. I have better focus and more productivity than I have ever had before!"**

N.H., Naples, FL

For more information contact:

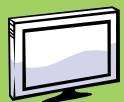
* Statements made about this product have not been evaluated by any government agency. This product may or may not give the desired result intended. Any testimonials given reflect the actual experience of each individual, are anecdotal only, and may be atypical.



terra^{gia}™

UNIVERSAL GUARD™

FOR UNIVERSAL USE ON WIRED & WIRELESS ELECTRONIC DEVICES



Television - Two Chips

- 1 chip centered above TV screen*
- 1 chip centered below TV screen*
- *Do NOT adhere chip to screen itself



Microwave - Two Chips

- 1 chip on both the top-left and top-right corners, close to door seals*
- *Do NOT adhere chip to door glass itself



Video Game Consoles - Two Chips

- 1 chip centered on top of console
- 1 chip on bottom of each controller



Hair Dryer - One Chip

- 1 chip on any flat surface of dryer



Cordless Phone - Two Chips

- 1 chip on base station, close to antenna
- 1 chip on phone, close to antenna



Coffee Maker - One Chip

- 1 chip close to on/off switch



Laptop Computer - One Chip

- 1 chip, top-centered on the outside of the display panel



Toaster - One Chip

- 1 chip on front (centered)



Desktop Computer - Two Chips

- 1 chip on computer tower (top, front or side)
- 1 chip on monitor (centered on top or bottom)*
- *Do NOT adhere chip to screen itself



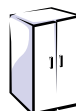
Vacuum Cleaner - Two Chips

- 1 chip on handle
- 1 chip on housing



Alarm Clock - One Chip

- 1 chip on face or top of alarm clock*
- *Do NOT adhere chip to screen itself



Refrigerator - Two Chips

- 1 chip (front-top-center of the unit)
- 1 chip (front-bottom-center of the unit)



Wireless Router - Two Chips

- 2 chips, on the top of the router, close to the antenna(s)



Automobile - Two Chips

- 1 chip on driver side dashboard
- 1 chip on passenger side dashboard



Office Equipment such as:

Printers, photocopiers, fax machines, etc.
Placement will vary, depending on the device.
Please contact Consultant Support with questions.

